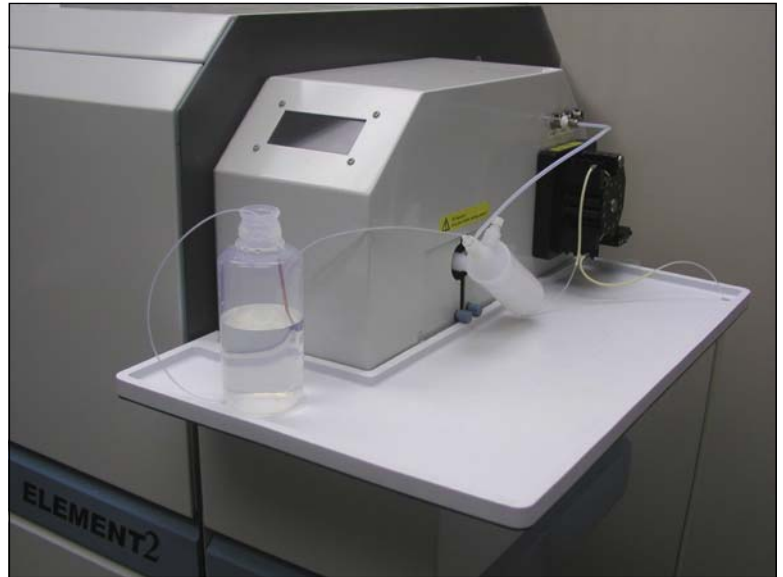
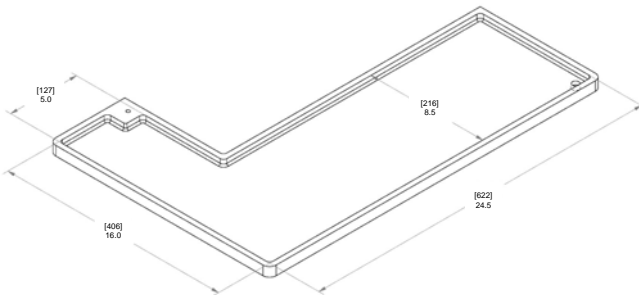


NEW E2-3 Sample Tray for the ThermoFinnigan *ELEMENT2* ICPMS

Increase the work area and make the use of sample introduction systems more convenient.

- ▲ Increases sample inlet work area by nearly 3x
- ▲ Constructed from chemically resistant polypropylene
- ▲ Directly and easily replaces standard *ELEMENT2* tray
- ▲ Integrated drain port to channel waste directly to waste container
- ▲ Convenient for use with the Apex system



ES-2999-5220 E2-3 Sample Tray for the ThermoFinnigan *ELEMENT2*



Greater work area makes using the Apex or other sample introduction systems more convenient.

Elemental Scientific Inc.
2440 Cuming St
Omaha, NE 68131 USA
www.elementalscientific.com

Phone: 402.991.7800
Fax: 402.991.7799
Email: esi@icpms.com

